

FJORD 
BE UNIQUE



44
coupé

44
coupé

BE UNIQUE
MAKE EACH DAY LEGENDARY.

Once again, FJORD reinvents the concept of the top-class powerboat. The FJORD 44 coupé features our visionary, expressive arc-saloon entirely made of glass. This air-conditioned superstructure keeps you comfortable come rain, shine or chill.

No doubt – it is always the right time to go out with your FJORD 44 coupé.

PASSIONATE FOR
POWER



36 KN
max. speed

960 HP
with two engines

360° PANORAMA
arc-saloon





The FJORD 44 coupé was developed with sheer enjoyment in mind. Gratification is instant – within fractions of a second, it transforms tremendous engine power into overwhelming emotions.



SET YOUR PULSE RACING

There is no better entertainer than breathtaking speed. A triple pilot seat guarantees the driver is not the only one to experience this mighty rush of adrenaline.





FORMULA ONE FEELING

The iconic dashboard delivers pure eye-candy and provides an intuitive connection to the exhilarating engine performance. Everything is perfectly aligned to the needs of the helmsman, positioned exactly where you expect it to be.



STUNS WITH 360° VIEWS - THE

ARC-SALOON

Our arc-saloon fosters an atmosphere of pure indulgence. From the first moment on board, your family and friends will be captured by the combination of 360° views, generous height and luxurious furnishing.





*PERFECT CLIMATE
IN ANY WEATHER*

Weather set fair? Sunroof and side doors are waiting to let in the sea breeze. Open the grand aft twin doors, and the saloon and cockpit become a single sunny living space. Thanks to aircon and many opening windows, you can create your ideal climate if you prefer staying inside.

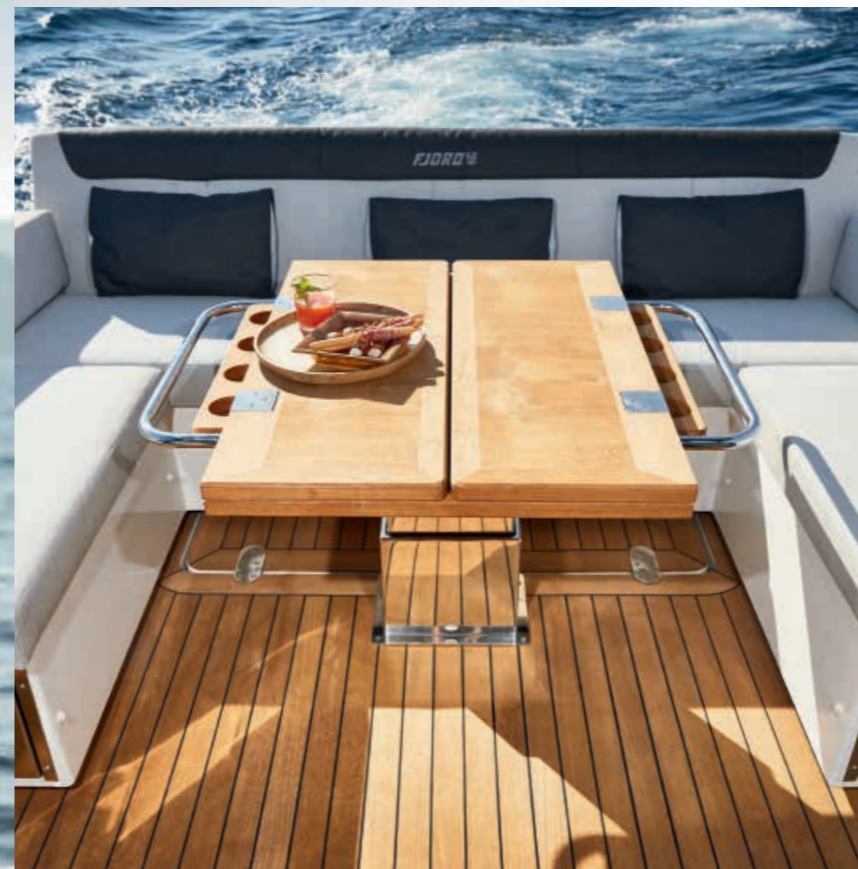
THE WHOLE RANGE OF

PLEASURES



Catching the day's best rays on the sunpad, taking a refreshing swim in the ocean and enjoying a chilled refreshment before dinner – everything is designed to experience moments that should never end.





THE TASTE OF SUMMER

Sun or shade? Exploratory dive or sweet idleness? Do whatever you feel like – the FJORD 44 coupé makes it a pleasure. The bathing platform, the versatile cockpit area and the sun loungers on the foredeck are waiting for you. It's all at your fingertips.



Celebrate the day. Enjoy fresh delicacies and a drop of something fine. All with your favourite tracks in high-end sound quality – and with your own underwater mood lighting.

FORM FOLLOWS

FASCINATION

With her streamlined arc-saloon, the FJORD 44 coupé interprets the DNA of FJORD in its own way. The roofline, slightly rising to the rear, is an outstanding expression of what FJORD stands for: power, purism, pleasure.





AESTHETICS TO MOVE YOU

Clean yet provocative lines make this boat a true FIORD. The arc-saloon owes its outstanding appearance not least to the masterly combination of glass, mirror-finish stainless steel and flawless composite work.



YOU DEFINE YOUR APPEARANCE

Among the many individual statements you make with your FJORD, the hull paint stands out most. That's why the entire range of colours is at your disposal, from prestigious to very extravagant hues. Based on your requirements, FJORD can also develop special coating effects or multicoloured hull designs.



The hull can be painted in almost any colour.



helm seat upholstery – synthetic & ultraleather



dark grey

light grey



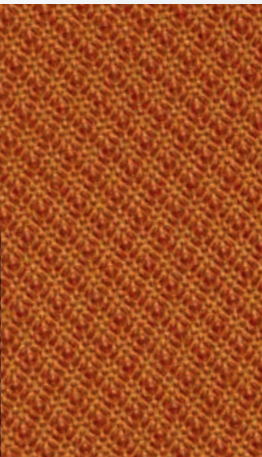
red

mandarin orange

cream

The materials depicted are a tiny sampling of what is available. Your FJORD dealer will show you the entire choice.

cubic cayenne



cockpit bench & sunbed upholstery

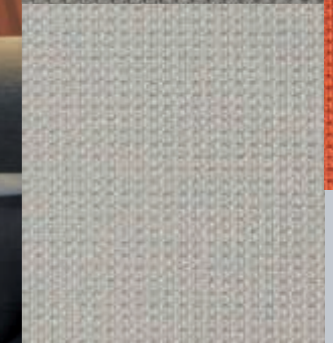
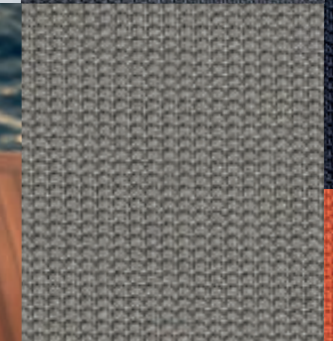
marine salt



olive grove

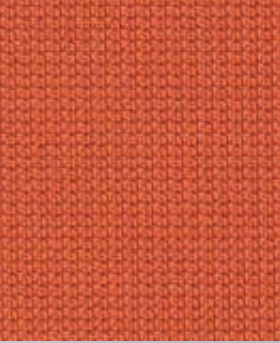


aubergine



matrix

shore grey
harbour seal
gull wing



rattan
gulf stream
lobster



SURROUNDED BY
STYLE

From the moment you enter the lower deck, you'll be struck by a sense of spaciousness and well-being. Clear, clean shapes and the use of exquisite materials embody the luxurious character of FJORD.





Attention to detail and exceptional comfort characterise the ambience in the bathroom – it is a singular invitation to unwind.
Use the second cabin as storage space or give two extra guests an elegant home during their stay on the water.

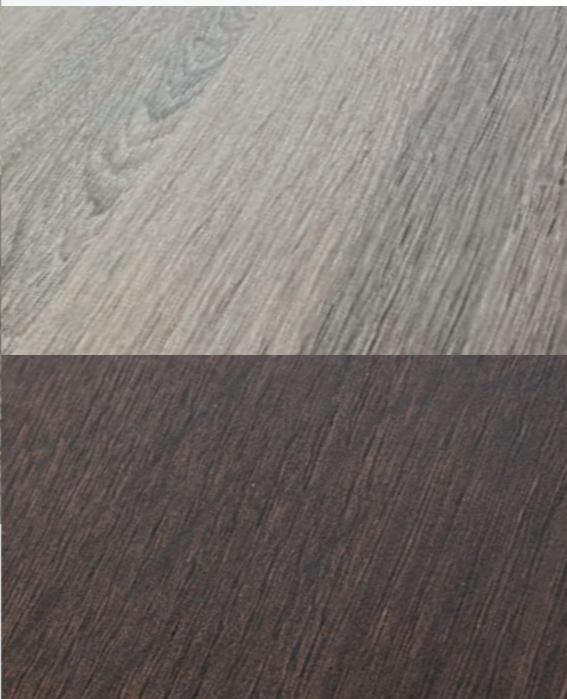


sugar
coffee

carpets

floor woods

basque oak
noce nero



furniture wood

lisboa chestnut
milano oak



warm mahogany
atlanta walnut

upholstery –
scoop leather

ivory
clay
mud
amber
basalt

COMPOSE YOUR MASTERPIECE

The cabins on a FJORD are where the owner expresses all their personality - and therefore unique to each yacht. Handpicked from top-class manufacturers, the choice of fabrics, furniture woods, floorings and leathers spans an enormous range of styles and colours.



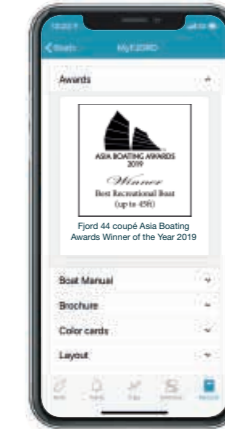
- FRIDGE**
Turn on/off remotely
- LIGHTS**
Turn on/off
- HATCH/DOOR SENSOR**
Monitor unauthorised access
- SHORE POWER**
Monitor connection
- ENGINE**
Monitor activity
- MOTION SENSOR**
Collision and grounding detection
- FUEL TANK**
Monitor level
- WATER TANK**
Monitor level
- BATTERY BANK**
Monitor level
- GPS, WIND AND SPEED DATA**
- ANCHOR WINCH**
Monitor activity
- BOW THRUSTER**
Monitor activity
- BILGE PUMP**
Monitor activity

* Control and sensors depend on the configuration of your FJORD.

MY FJORD SAFETY CLOUD

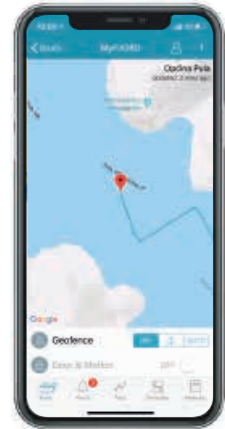
Everyone is talking about the digital future. But FJORD is implementing it – with the first cloud-based telematics system for serial production motor yachts. You can access your boat's technical data and functions live via the mobile app or via the owner's area at www.fjordboats.com

Intelligent functions such as BoatMonitoring, eLogbook and eServicebook enable you to keep an automatic logbook, stay on top of all servicing dates and monitor your yacht seamlessly.



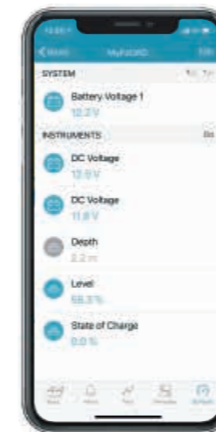
MANUALS

All manuals and instructions within one app.



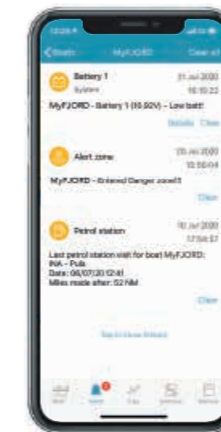
POSITION

Track your position in real time.



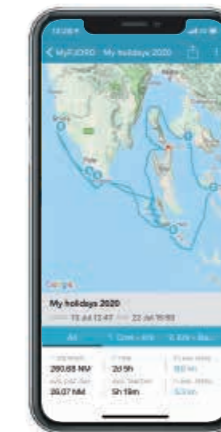
SENSORS

Monitor your charge levels and devices.



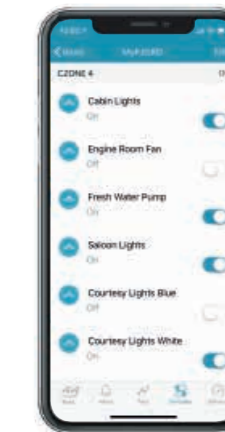
ALARMS

Push notifications on current events.



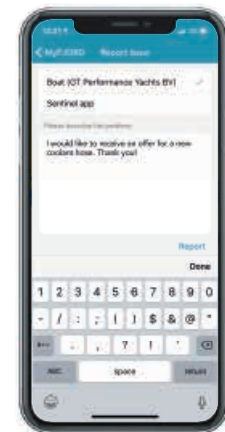
TRIP LOG

Share your cruises and track data with friends.



CONTROL

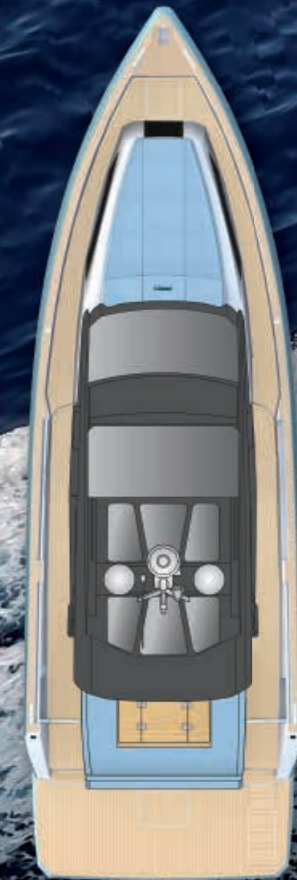
Operate your electronic devices by remote control.



LIVE REPORT

Direct contact to your dealer for quick help.

LAYOUT OF YOUR CHOICE



MAIN DECK
with roof



MAIN DECK



CABIN CONCEPT
standard



CABIN CONCEPT
option

TECHNICAL DETAILS

LOA	13.45 m	44' 2"
Hull length	11.99 m	39' 4"
Beam	4.25 m	13' 11"
Draught	1.14 m	3' 9"
Fresh water capacity	295 l	65 UK gal
Fuel capacity	900 l	198 UK gal
Displacement	11.25 t	11.07 UK t

CE Category	B
Max. persons	12
Engines Standard	2x Volvo Penta IPS500 approx. 30 knots
Engines Option	2x Volvo Penta IPS650 approx. 36 knots
Design	Allseas Design & FJORD

*All performance figures are given in good faith and are intended as an indication. These figures cannot be guaranteed as the top speed in particular is affected by the cleanliness of the hull, conditions of the propellers, weight carried and air/sea temperature. FJORD reserves the right to change specifications in line with the company policy of improvement through research and development. Errors and omissions expected. Please check with your dealer for a full list of inclusions. Above specifications are non-contractual. Valid from 01.01.2020

44
coupé



THE

FOREVER
ORIGINAL



FJORD 



52 open



44 open



41 open



38 open



44 coupé



38 xpress

FJORD / Ladebower Chaussee 11 / 17493 Greifswald

This brochure is not contractual. The yachts depicted partly comprise special equipment not included in the standard scope of supply. Illustrations may not correspond with current versions. Subject to alterations in design and equipment without notice and errors excepted. Printing: Druckhaus Panzig. Design: smz GmbH. Photos: Nico Krauss.

CIBF44co/C/GB/0420