

*colours & material*

*2019/2020*

**FJORD**   
*be unique*



all models

*hull - exterior  
gelcoat & painted*

**FJORD** 

*gelcoat*

*painted*



*standard signal white*

The hull can be painted in almost every colour (metallic / non metallic) according to the Alexseal Yacht Coatings Selection. Please ask your dealer.

all models

waterline – exterior  
gelcoat & painted



gelcoat

painted



standard for all models dark grey

standard 52 open jet black

The waterline can be painted in almost every colour (metallic / non metallic) according to the Alexseal Yacht Coatings Selection. Please ask your dealer.

all models

dashboard - exterior  
gelcoat & painted

**FJORD**

gelcoat

painted



standard signal white

The steering can be painted in almost every colour (metallic / non metallic) according to the Alexseal Yacht Coatings Selection. Please ask your dealer.

galley - exterior  
gelcoat & painted

**FJORD**

all models

gelcoat

painted



standard 52 open  
standard 44 open  
standard 40 open  
standard 44 coupé  
option 38 open  
option 38 xpress signal white

The galley can be painted in almost every colour (metallic / non metallic) according to the Alexseal Yacht Coatings Selection. Please ask your dealer.

all models

t-top & coach roof – exterior  
painted

**FJORD** 



standard 52 open  
standard 44 open  
standard 40 open  
option 38 open  
option 44 coupé  
option 38 xpress jet black

standard 44 coupé  
option 38 open  
option 38 xpress signal white

option 52 open / 44 open / 40 open / 38 open  
option 38 xpress

The T-Top can be painted in almost every colour (metallic / non metallic) according to the Alexseal Yacht Coatings Selection. Please ask your dealer.

standard 52 open  
standard 44 open  
standard 40 open  
standard 44 coupé  
option 38 open  
option 38 xpress

flooring - exterior  
teak

**FJORD** 



teak black

option all models

flooring - exterior  
synthetic teak



weathered white

scrubbed white

teak white

scrubbed grey

teak grey

weathered black

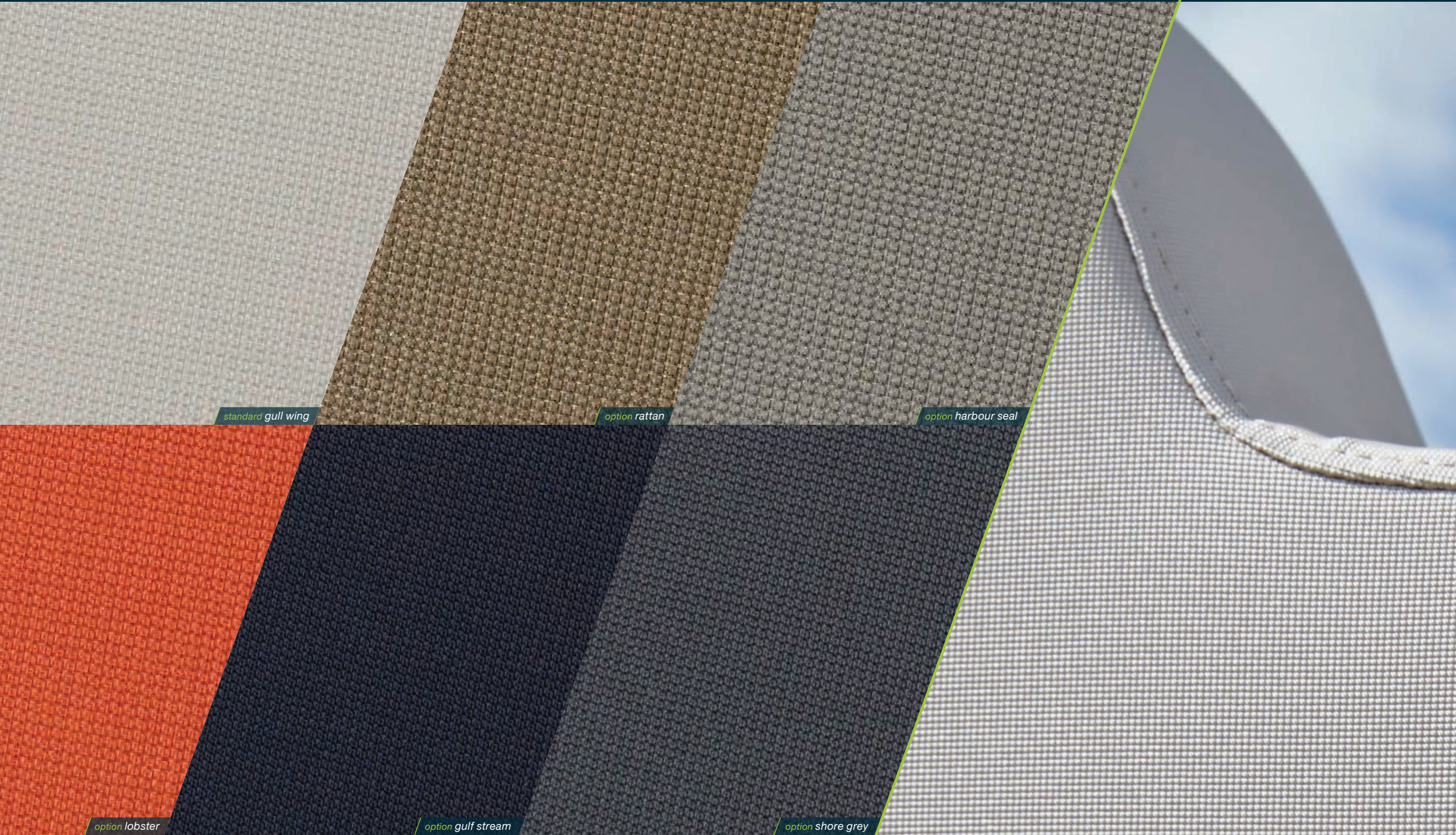
scrubbed black

teak black



all models

cockpit bench & sunbed upholstery - exterior  
matrix



standard gull wing

option rattan

option harbour seal

option lobster

option gulf stream

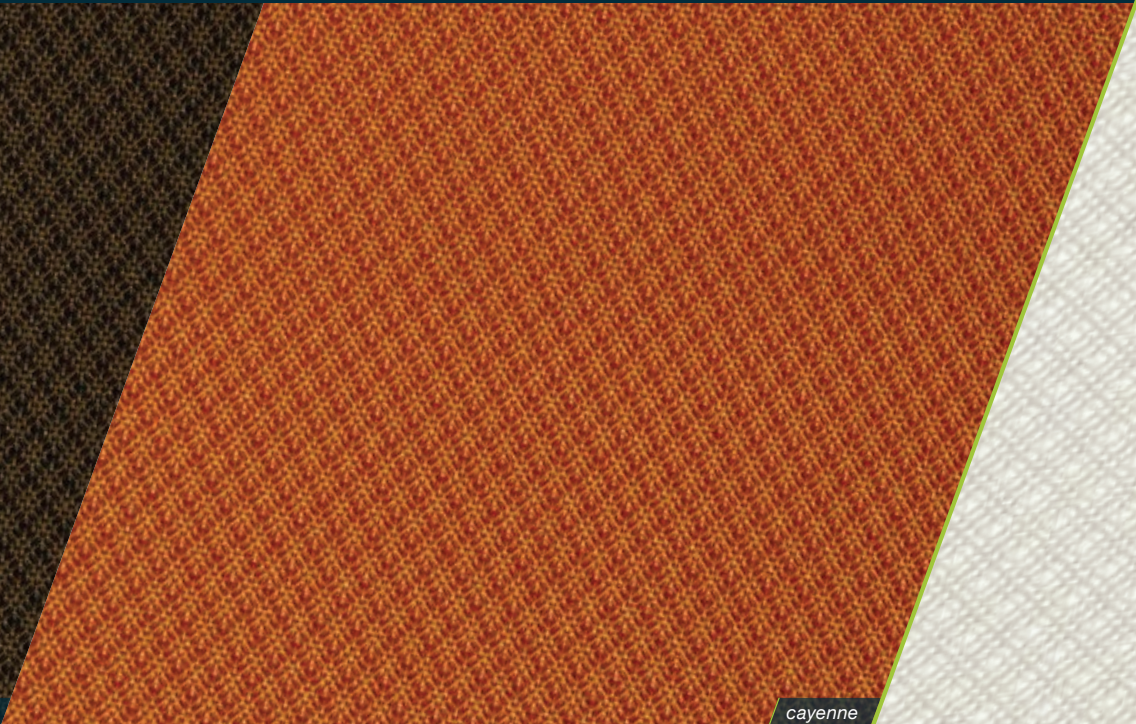
option shore grey

all models

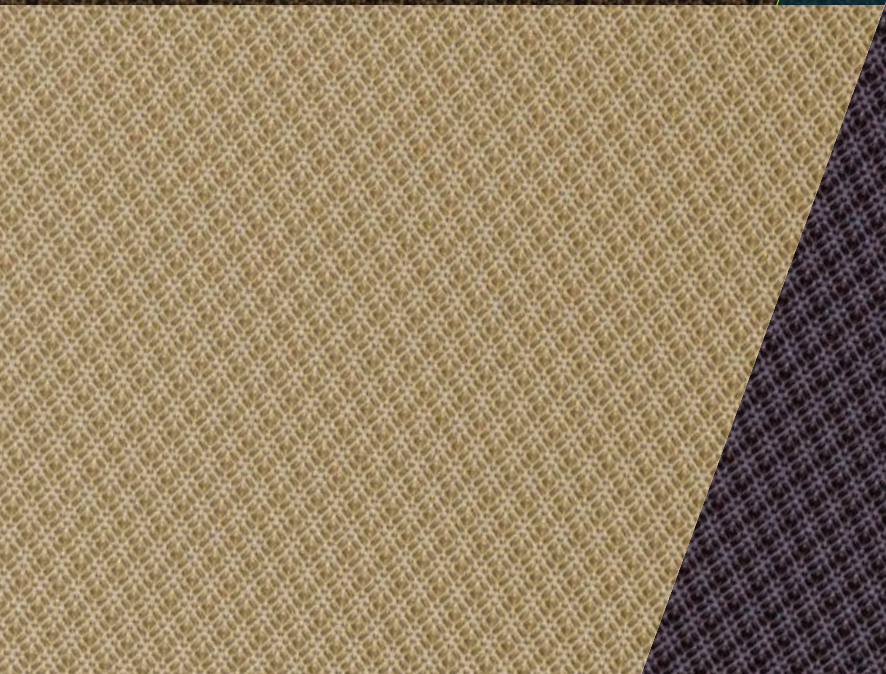
cockpit bench & sunbed upholstery - exterior  
cubic



espresso



cayenne



olive grove



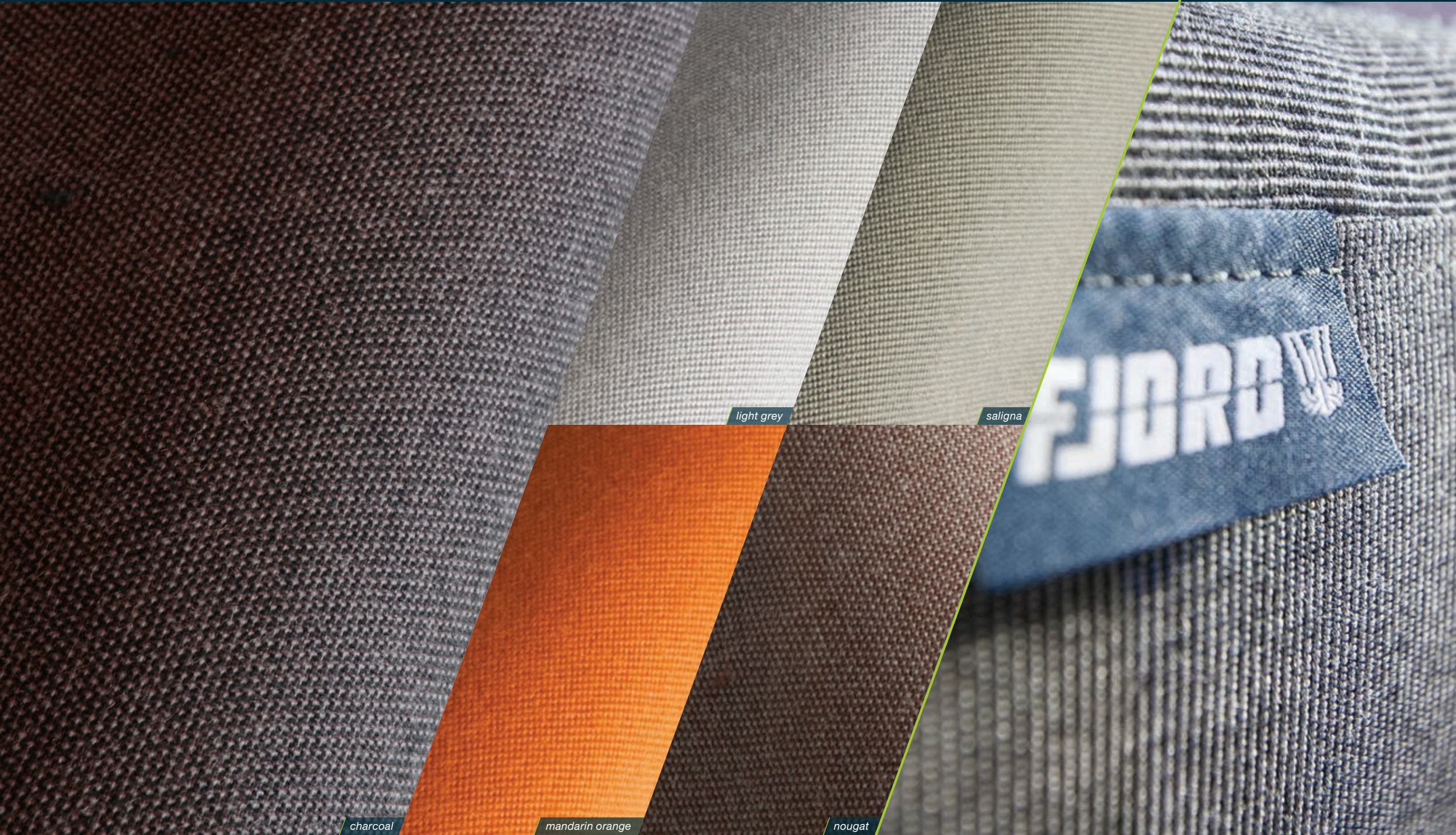
aubergine



marine salt

option all models

*cockpit bench & sunbed upholstery - exterior  
sunbrella*



light grey

saigna

charcoal

mandarin orange

nougat

option all models

*cockpit bench & sunbed upholstery - exterior  
ultraleather*



dark grey

light grey

cream

red

mandarin orange

52 open  
44 open  
40 open  
38 open  
44 coupé  
38 xpress

helmsman seat upholstery – exterior  
matrix & synthetic leather

**FJORD** 

standard 38 open  
standard 38 xpress gull wing

standard 44 open  
standard 40 open  
standard 44 coupé dark grey  
option 38 open  
option 38 xpress

standard 52 open dark grey



option all models

helmsman seat upholstery - exterior  
ultraleather



light grey

cream

dark grey

red

mandarin orange

all models

upholstery - interior  
smooth



option taupe

option silver

option stone

option charcoal

option denim

standard Porto Bello cream

option all models

upholstery - interior  
dash



glacier

oyster

muscat

graphite

cliffside



option all models

upholstery - interior  
padua



bronze

rock island

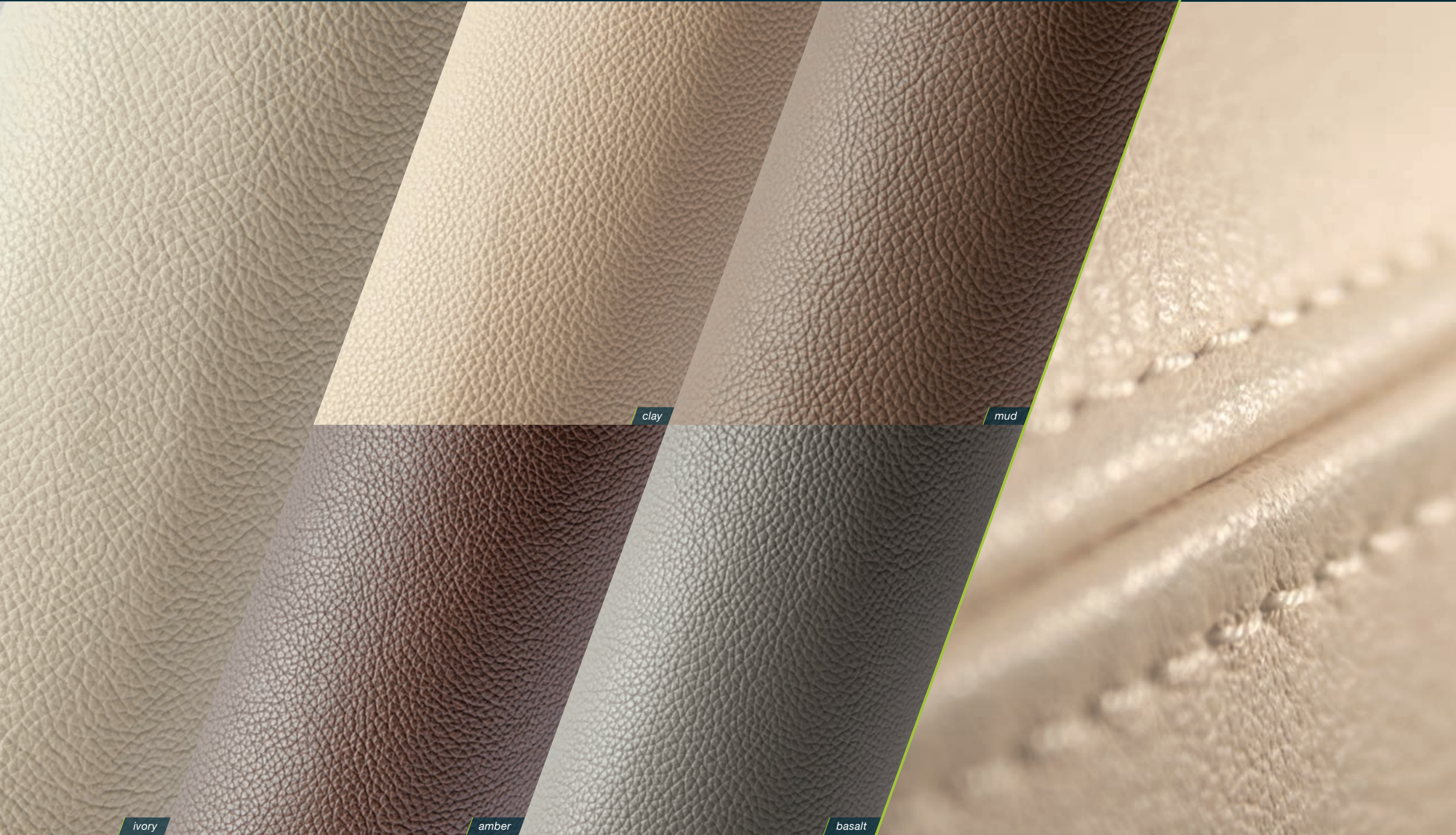
almond

black truffle

husky

option all models

upholstery - interior  
scoop leather



ivory

clay

mud

amber

basalt

all models

Marine optimized real wood veneer from ALPI.



standard warm mahogany

option lisboa chestnut

option atlanta walnut

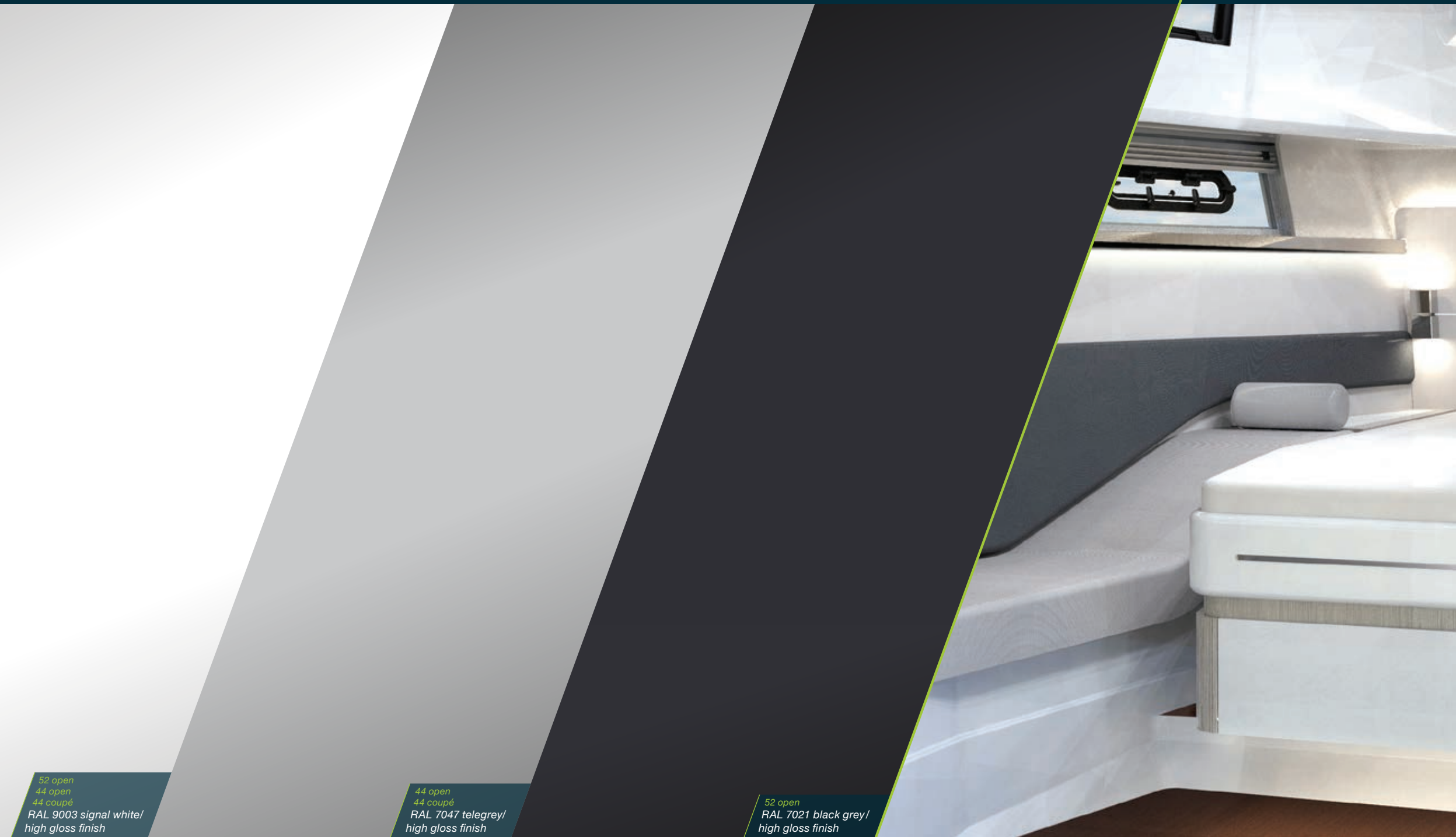
option milano oak

warm mahogany and milano oak are available in satin finish.  
52 open: atlanta walnut and lisboa chestnut can be ordered in satin or high gloss finish.

option 52 open  
option 44 open  
option 44 coupé

furniture – interior  
painted

**FJORD** 



52 open  
44 open  
44 coupé  
RAL 9003 signal white/  
high gloss finish

44 open  
44 coupé  
RAL 7047 telegrey/  
high gloss finish

52 open  
RAL 7021 black grey/  
high gloss finish

52 open  
44 open  
44 coupé

flooring - interior  
wood

**FJORD** 



standard pale acacia

option eternal oak

option basque oak

option noce nero

standard 40 open  
standard 38 open  
standard 38 xpress  
option 52 open  
option 44 open  
option 44 coupé

carpets - interior  
sisal

**FJORD** 



sisal

option all models

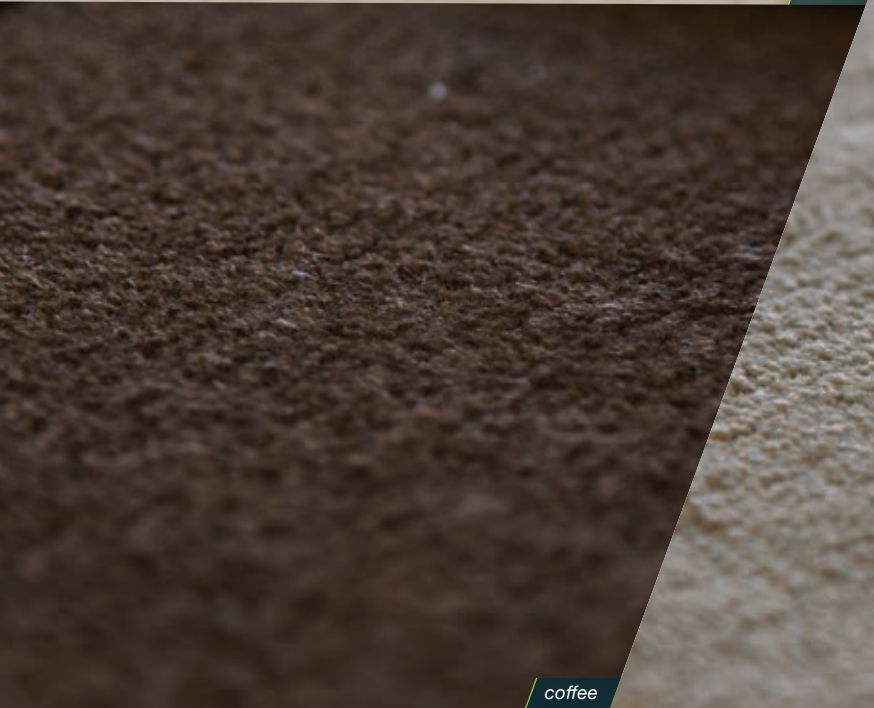
carpets - interior



sugar



ice cube



coffee



tobacco



*worktop in head - interior*

**FJORD** 

*all models*

standard 52 open  
standard 38 open  
standard 38 xpress pebble grey

standard 44 open  
standard 40 open  
standard 44 coupé royal quartz

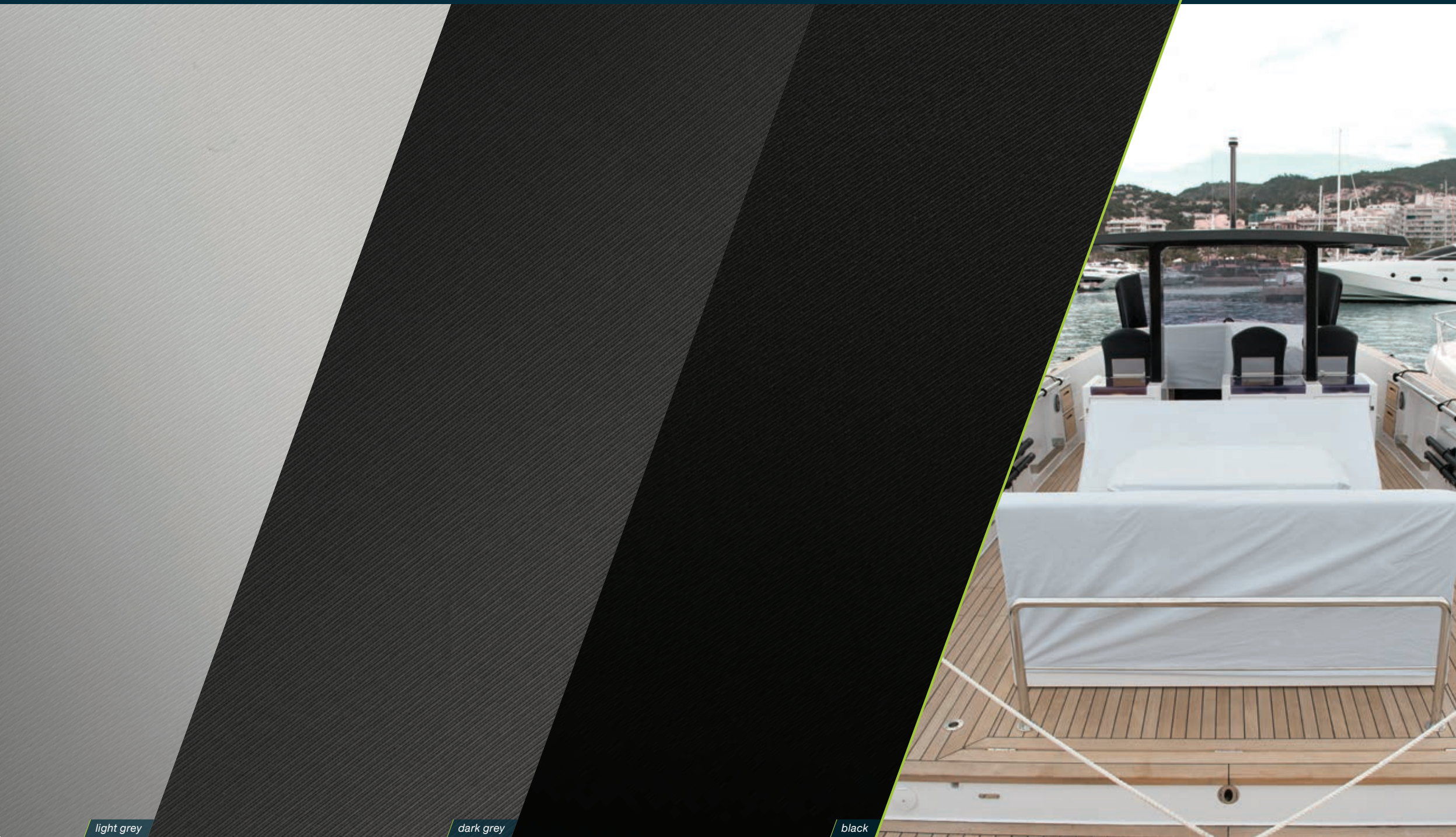




*covers - exterior*

**FJORD** 

*option all models  
cockpit canopy only for 52 open and 44 coupé*



*light grey*

*dark grey*

*black*

[www.fjordboats.com](http://www.fjordboats.com)

**FJORD**   
*be unique*

